



3Bee



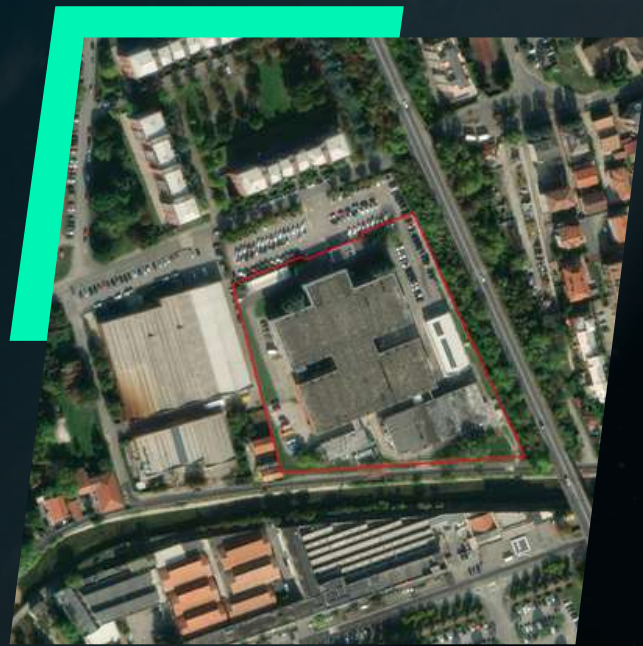
XNATURA

Sync with Earth

THALES
ALENIA
SPACE


We worked on a nationwide scale to monitor and protect their most at-risk sites, transforming a complex industrial footprint into a strategic intelligence network for a more resilient future

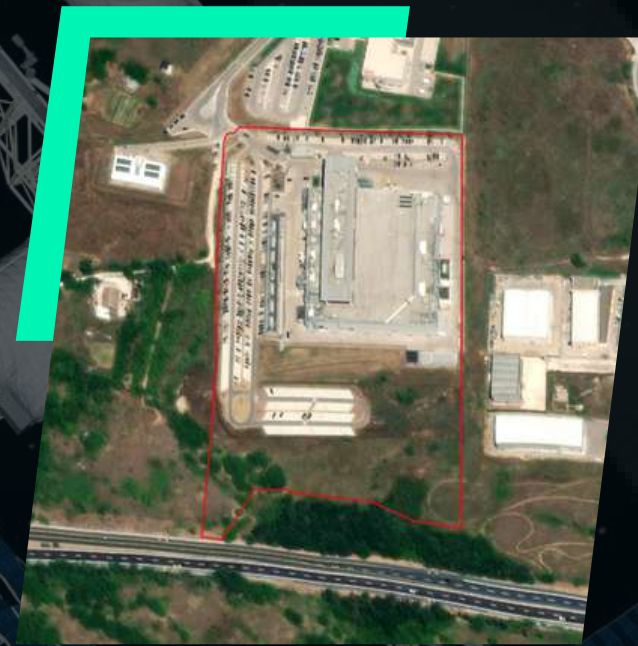
We analyzed and monitored **4 key Italian sites through remote sensing**



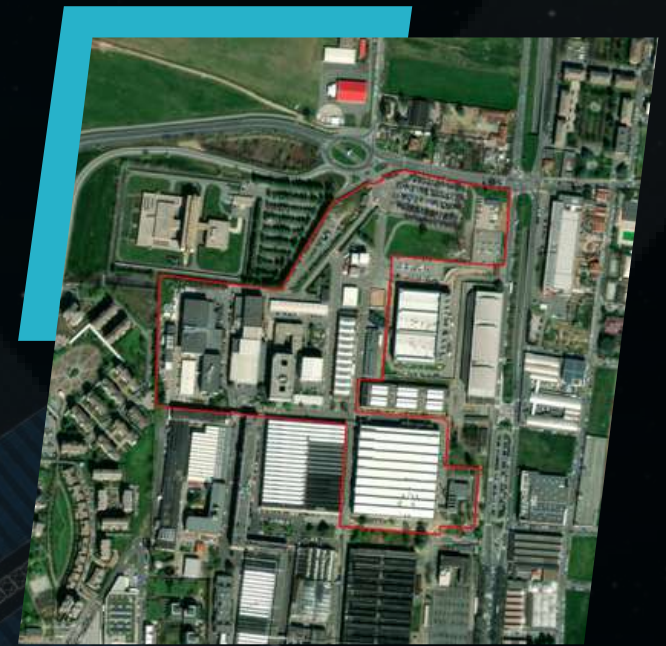
 **Gorgonzola**
1.73 ha



 **Rome**
7.54 ha



 **L'Aquila**
5.53 ha







 **Turin**
13.70 ha

covering a total area of **28 hectares**

Biodiversity Monitoring was Performed using IoT Sensors

5 **Spectrum** sensors



-  Gorgonzola
-  2 in Rome
-  L'Aquila
-  Turin

2 **PollyX** sensors



-  Rome
-  L'Aquila



We monitored **242**
pollinators



Note
115hz

#22



Note
122hz

#10



Note
130hz

#14



Note
137hz

#4



Note
145hz

#5



Note
152hz

#4

The Future of Our Hubs: Rome & L'Aquila



 Rome

We are working to transform industrial perimeters into active ecological gateways, turning a high-traffic area into a monitored sanctuary for biodiversity and air quality.



 L'Aquila

We plan on transforming corporate spaces into active centers of biodiversity intelligence and public communication, bridging the gap between high-tech monitoring and stakeholder engagement.

We built a green terrace, equipped with:

An educational journey featuring 1 solitary bee house, 1 butterfly house, 1 ladybug house, and 4 information signs

30 planters with 130 nectar-rich plants for pollinators and a PollyX sensor



We transformed these industrial sites into a coordinated intelligence network, ensuring that risks are prioritized and every site now actively contributes to a better, scientifically protected planet



3Bee

XNATURA
Sync with Earth



Contacts

VIA PASTRENGO, 14 MILANO (MI)
VIRGINIA.CASTELLUCCI@3BEE.COM
WWW.XNATURA.COM



Virginia Castellucci
Head of Sustainability